

٥ 553 2010

1.455 ٥

٥ ٥ ( 335)  
٥ 2010

2010 ٥ 168 ٥  
٥  
488+) 2009

2010 953 ٥  
115 ٥

.)

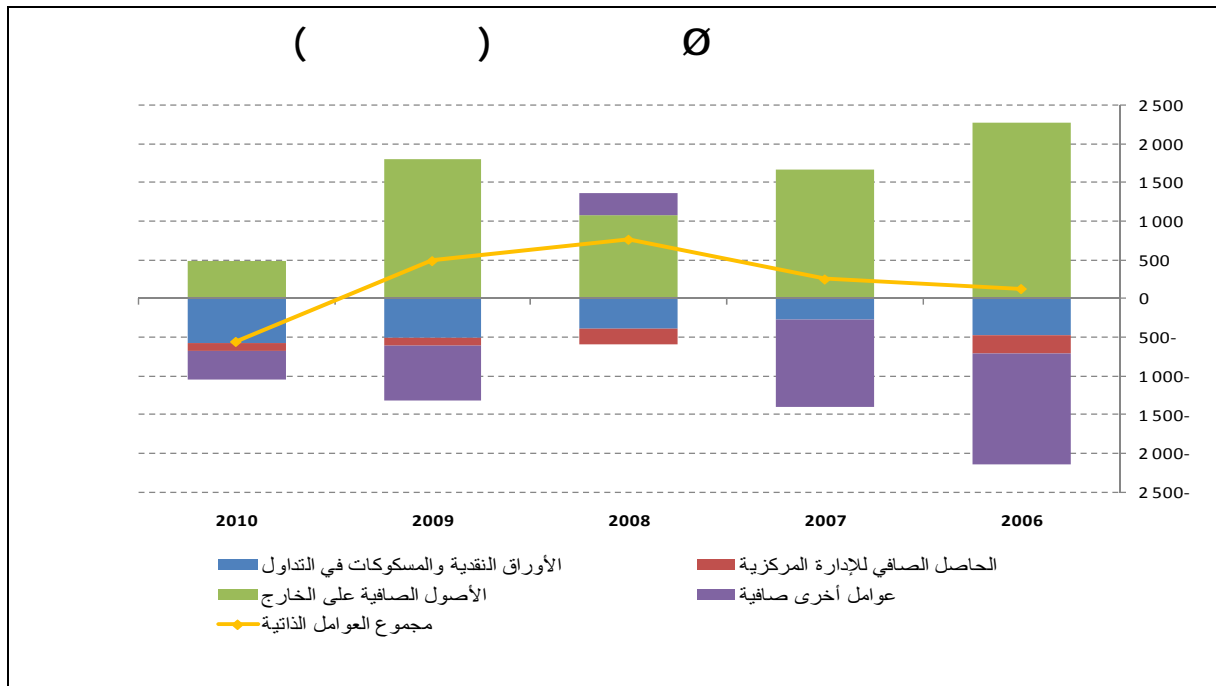
2010

٥ ٥ 2009  
٥ ٥  
٥ ٥  
٥ ٥ ( 569)

2010

2010

2009



٥  
 844 ٥ 2010 222  
 ٥ ٥ 86  
 .( 855 ٥ 190)

1  
 . 1.255 509 ٥

869 ٥ 2010 196

٥ 508  
 ٥ ٥ ٥ 36 2010 692 2009  
 2009 75 85 53 ٥

( )

Ø

<sup>1</sup> 2009\2010	2010	2009	
569 -	5.485 -	4.916 -	Ø
108 -	240 -	132 -	Ø
3 -	663 -	660 -	:
485+	10.344	9.859	Ø
413+	12.963	12.550	:
365 -	3.586 -	3.221 -	Ø
557 -	1.033	1.590	( ) Ø =
1.045+	190	855 -	
1 -	0	1	7 1
0	0	0	
1+	0	1 -	
1+	26	25	) Ø Ø Ø ( )
0	0	0	(
7 -	30 -	23 -	24
27+	36	9	24
1.066+	222	844 -	( ) =
509+	1.255	746	( + )

(-) <sup>1</sup>

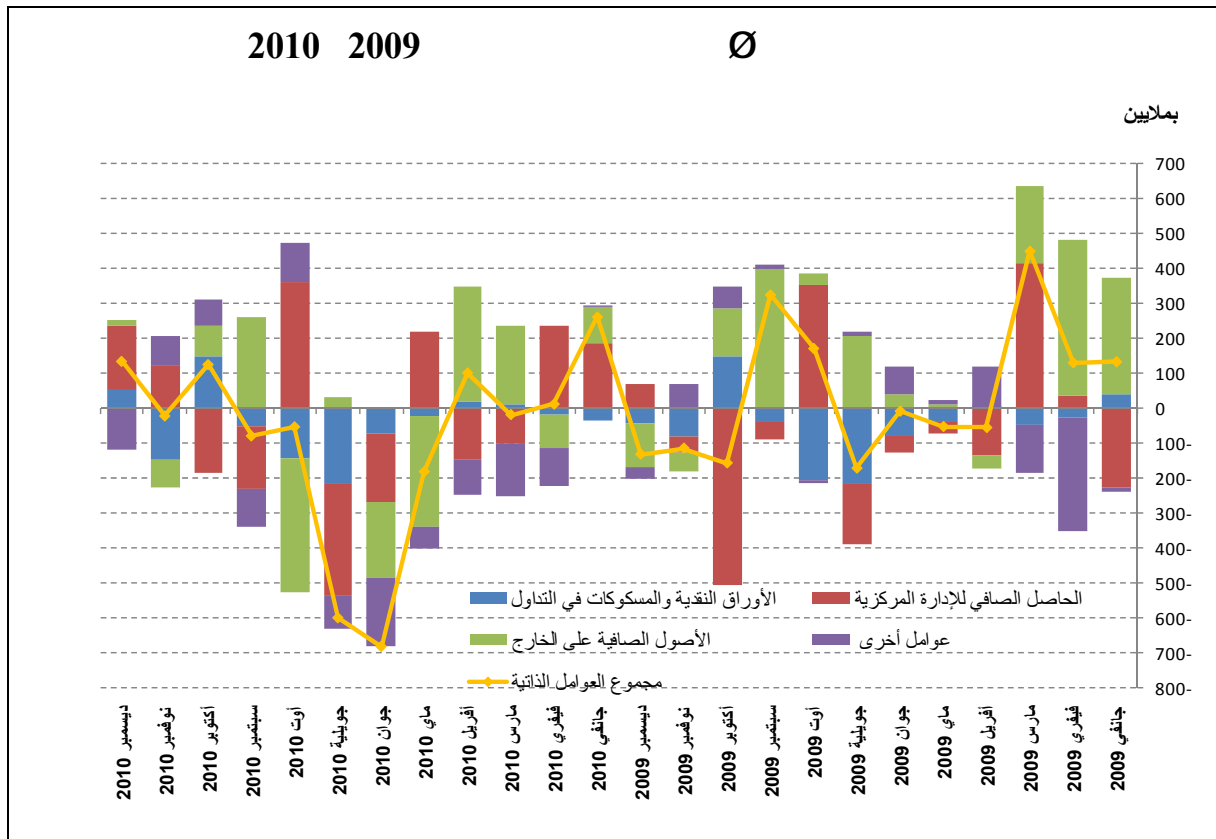
:

Ø  
 Ø ( 387+)  
 Ø Ø Ø  
 Ø Ø 1.258 25  
 Ø 244) ( 707 782)  
 Ø Ø Ø "  
 ( Ø Ø 240) Ø 1"  
 .2009  
 Ø Ø 250 Ø  
 Ø "

2009

349

250 <sup>1</sup>



0 0 54 0

2009

2010 0 0 0

756

0 0 0 0  
0 561 0

.2010

1.351

2009

0 0

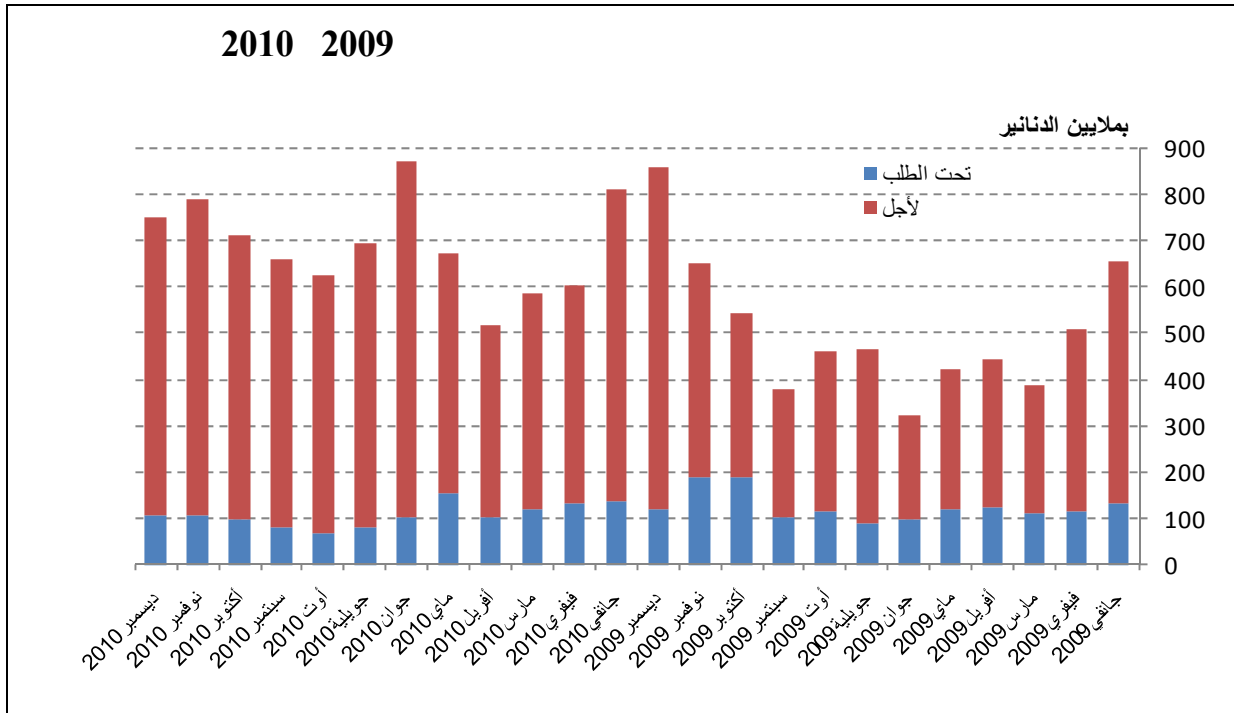
2007

0 794

0 24

0 0 82

713



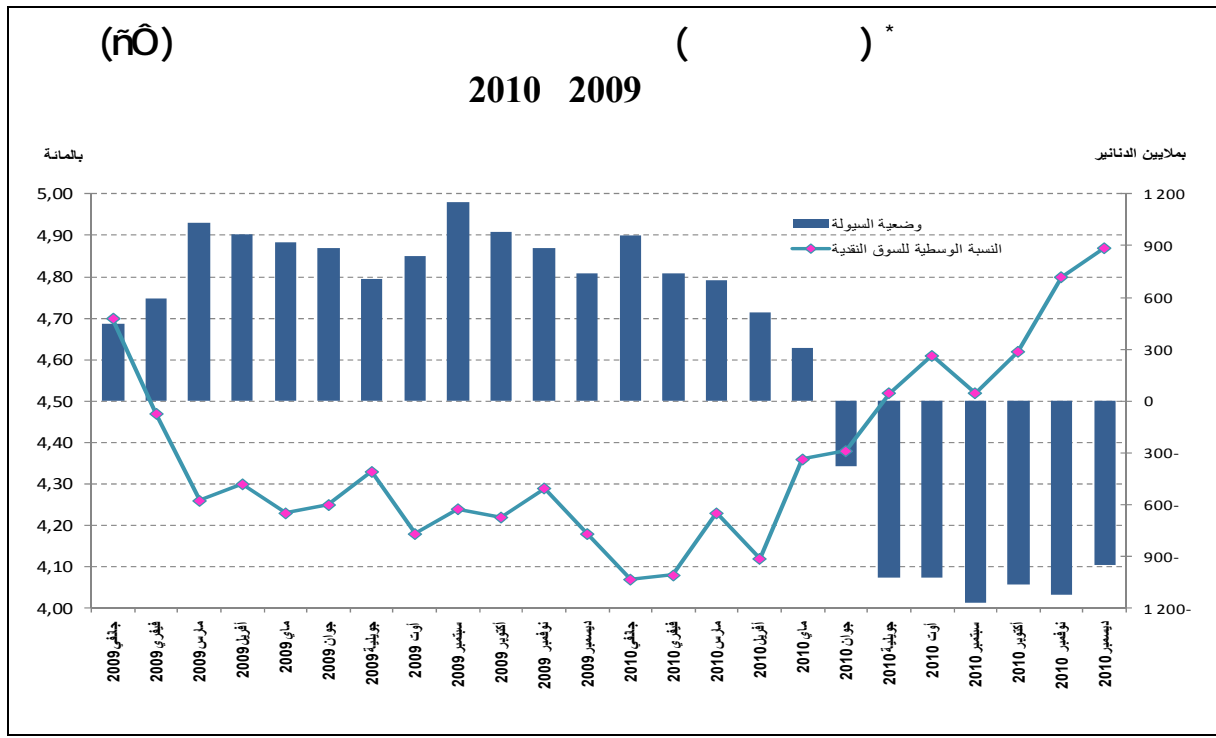
0 0  
0 0  
0

4,36 4,07

0  
0

434 0

0 0 0 0



2010

211 Ô

253 Ô

Ô

Ô Ô

166

311)

Ô

( Ô )

1

597

Ô

2000

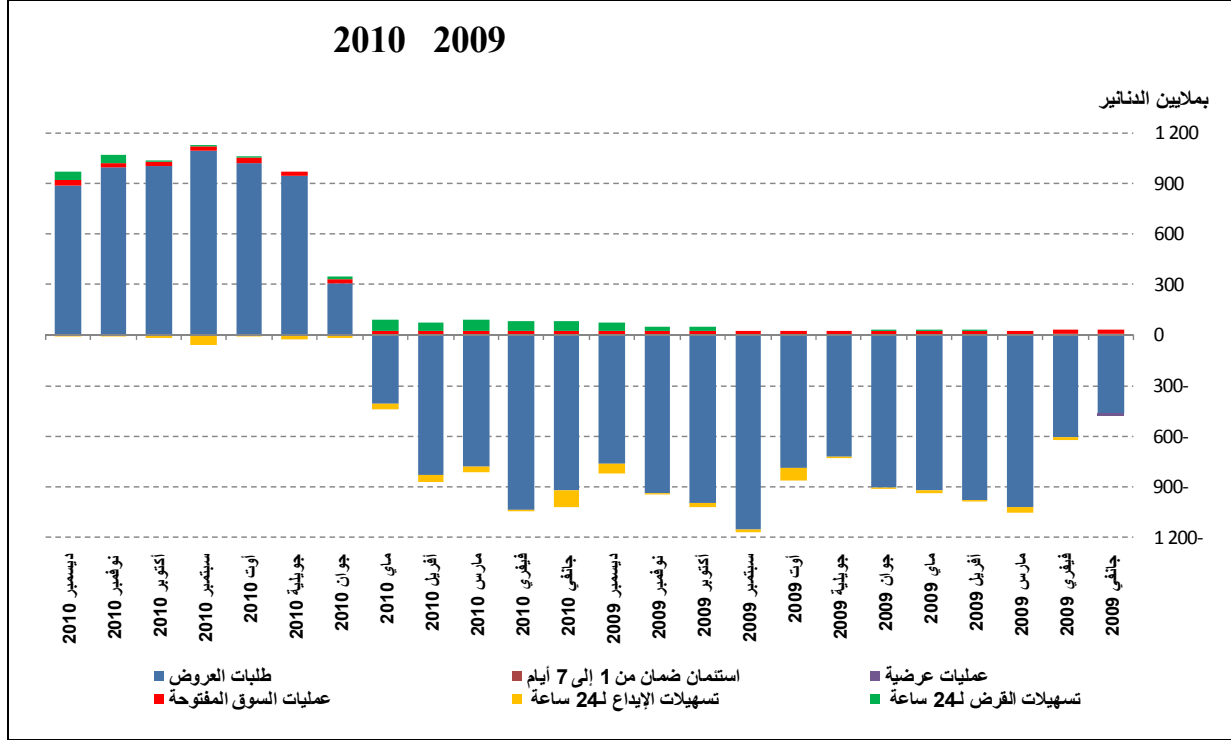
284 Ô

2010

0  
1.484

893

.2010



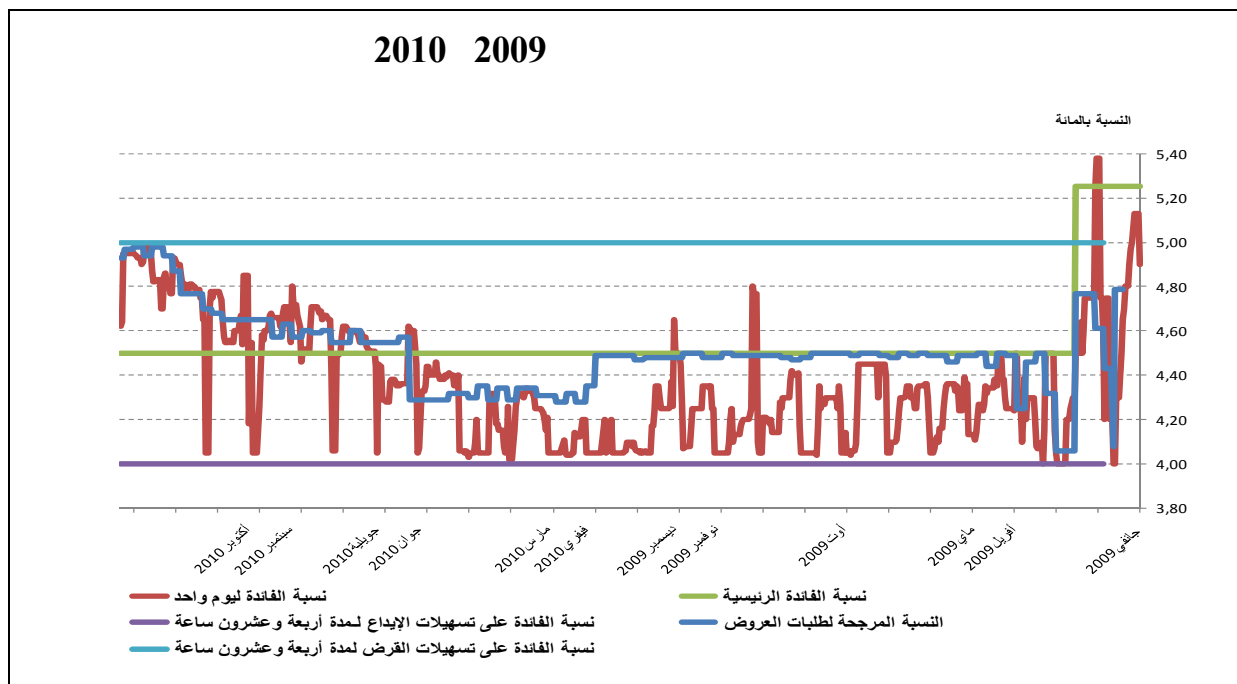
895

893

( )

Ø	Ø	
2010	2010	
893	794 -	
0	0	7 1
0	0	
26	26	
0	0	( )
19 -	45 -	24
21	57	24
921	756 -	

639  
 88  
 730  
 2010  
 4,87  
 4,38



5 4 24  
 50  
 2,25  
 2,50 25  
 2,80  
**2011**

3,3  
 2011